

828 U

 **Benelli**

828 U

THE 828 U SUBLIME STYLE
PERFECT FUNCTIONALITY



Index

USE • MAINTENANCE	1	ACCESSORIES AND ADJUSTMENTS:	
Basic safety rules	2	Perfect Fitting	18
Assembly	5	Drop and cast fine adjustment	18
Safety catch	8	Internal choke	22
Firing selector	8	Removing and changing the comb	24
Loading	9	Interchangeable ribs	25
- Choice of ammunition	10	SPARE PARTS	27
Firing	11		
Unloading	11		
- Strikers uncocking	12		
Shotgun stripping	13		
Maintenance	16		
Shotgun assembly	17		

All text and illustrations contained in this manual refer to a right-handed shotgun; the instructions “right” or “left” always refer to the shotgun while shouldered by the user.



BASIC SAFETY RULES

WARNING: PLEASE READ THIS MANUAL BEFORE HANDLING YOUR FIREARM.

WARNING: FIREARMS CAN BE DANGEROUS AND CAN POTENTIALLY CAUSE SERIOUS INJURY, DAMAGE TO PROPERTY OR DEATH, IF HANDLED IMPROPERLY. THE FOLLOWING SAFETY RULES ARE AN IMPORTANT REMINDER THAT FIREARM SAFETY IS YOUR RESPONSIBILITY.

1. NEVER POINT A FIREARM AT SOMETHING THAT IS NOT SAFE TO SHOOT.

Never let the muzzle of a firearm point at any part of your body or at another person. This is especially important when loading or unloading the firearm. When you are shooting at a target, know what is behind it. Some bullets can travel over a mile. If you miss your target or if the bullet penetrates the target, it is your responsibility to ensure that the shot does not cause unintended injury or damage.



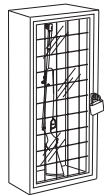
2. ALWAYS TREAT A FIREARM AS IF IT WERE LOADED.

Never assume that a firearm is unloaded. The only certain way to ensure that a firearm has the chamber(s) empty is to open the chamber and visually and physically examine the inside to see if a round is present.

Removing or unloading the magazine and/or loader will not guarantee that a firearm is unloaded or cannot fire. Shotguns and rifles can be checked by removing all rounds and by then opening and inspecting the chamber so that a visual inspection of the chamber for any remaining rounds can be made.

3. STORE YOUR FIREARM SO THAT CHILDREN CANNOT GAIN ACCESS TO IT.

It is your responsibility to ensure that children under the age of 18 or other unauthorized persons do not gain access to your firearm. To reduce the risk of accidents involving children, unload your firearm, lock it and store the ammunition in a separate locked location. Please note that devices intended to prevent accidents - for example, cable locks, chamber plugs, etc. - may not prevent use or misuse of your firearm by a determined person. Firearm storage in a steel gun safe may be more appropriate to reduce the likelihood of intentional misuse of a firearm by an unauthorized child or person.



4. NEVER SHOOT AT WATER OR AT A HARD SURFACE.

Shooting at the surface of water or at a rock or other hard surface increases the chance of ricochets or fragmentation of the bullet or shot, which can result in the projectile striking an unintended or peripheral target.





5. KNOW THE SAFETY FEATURES OF THE FIREARM YOU ARE USING, BUT REMEMBER: SAFETY DEVICES ARE NOT A SUBSTITUTE FOR SAFE HANDLING PROCEDURES.

Never rely solely on a safety device to prevent an accident. It is imperative that you know and use the safety features of the particular firearm you are handling, but accidents can best be prevented by following the safe handling procedures described in these safety rules and elsewhere in the product manual.

To further familiarize yourself with the proper use of this or other firearms, take a Firearms Safety Course taught by an expert in firearms use and safety procedures.

6. PROPERLY MAINTAIN YOUR FIREARM.

Store and carry your firearm so that dirt or lint does not accumulate in the working parts. Clean and oil your firearm, following the instructions provided in this manual, after each use to prevent corrosion, damage to the barrel(s) or accumulation of impurities which can prevent use of the gun in an emergency.

Before loading your firearm, always check internal part and the firearm to ensure that they are clean and free from obstructions.

Firing with an obstruction in the barrel(s) or chamber(s) can rupture the barrel(s) and injure you or others nearby. In the event you hear an unusual noise when shooting, stop firing immediately, engage the manual safety and unload the firearm.



Make sure the chamber(s) and barrel(s) are free from any obstruction, like a bullet blocked inside due to defective or improper ammunition.

7. USE PROPER AMMUNITION.

Only use factory-loaded, new ammunition manufactured to industry specifications: CIP (Europe and elsewhere), SAAMI® (U.S.A.). Be certain that each round you use is in the proper calibre or gauge and type for the particular firearm.

The calibre or gauge of the firearm is clearly marked on the barrel(s) of shotguns or on the slide or barrel of pistols. The use of reloaded or remanufactured ammunition can increase the likelihood of excessive cartridge pressures, case-head ruptures or other defects in the ammunition that can cause damage to your firearm and injury to yourself or others nearby.

8. ALWAYS WEAR PROTECTIVE GLASSES AND EARPLUGS WHEN SHOOTING.

The chance that gas, gunpowder or metal fragments will blow back and injure a shooter who is firing a gun is rare, but the injury that can be sustained in such circumstances can be severe, including the possible loss of eyesight. A shooter must always wear impact resistant shooting glasses when firing any firearm.

Earplugs or other high-quality hearing protectors help reduce the chance of hearing damage from shooting.





9. NEVER CLIMB A TREE, FENCE OR OBSTRUCTION WITH A LOADED FIREARM.

Open and empty the chamber(s) of your firearm and engage the manual safety catch before climbing or descending a tree or before climbing a fence or jumping over a ditch or other obstruction. Never pull or push a loaded firearm toward yourself or another person. Always unload the firearm, visually and physically check to see that the magazine/loader, loading mechanism and chamber(s) are unloaded and that the bolt is open before handing the firearm to another person.

Never take a firearm from another person unless it is unloaded, visually and physically checked to confirm it is unloaded. In any case, pick up the firearm only if opened.



10. AVOID ALCOHOLIC BEVERAGES OR JUDGMENT/REFLEX IMPAIRING MEDICATION WHEN SHOOTING.

Do not drink and shoot. If you take medication that can impair motor reactions or judgment, do not handle a firearm while you are under the influence of the medication.



11. NEVER TRANSPORT A LOADED FIREARM.

Always unload a firearm before putting it in a vehicle (chamber(s) empty, magazine/loader empty). Hunters and target shooters should load their firearm only at their destination, and only when they are ready to shoot.



If you carry a firearm for self-protection, leaving the chamber(s) unloaded can reduce the chance of an unintentional discharge.

12. LEAD WARNING.

Discharging firearms in poorly ventilated areas, cleaning firearms, or handling ammunition may result in exposure to lead and other substances known to cause birth defects, reproductive harm, and other serious physical injury. Have adequate ventilation at all times. Wash hands thoroughly after exposure.

WARNING: it is YOUR responsibility to know and abide by Federal, State and Local laws governing the sale, transportation and use of firearms in your area.

WARNING: this firearm has the capability of taking your life or the life of someone else! Always be extremely careful with your firearm. An accident is almost always the result of not following basic firearm safety rules.

Especially for U.S. consumers:

For information about Firearm Safety Courses in your area, please visit the National Rifle Association's web site at www.nra.org.



Assembly (from packaged gun)

Components of the package (fig. 1):

- a) barrel + fore-end assembly
- b) stock + receiver

- The shotgun components are wrapped in protective casings: comply with **environmental regulations** for their disposal.
- Even if the shotgun has not yet been used, it is advisable to **inspect** the interior of the barrels and make sure that they are clean and free from obstructions.

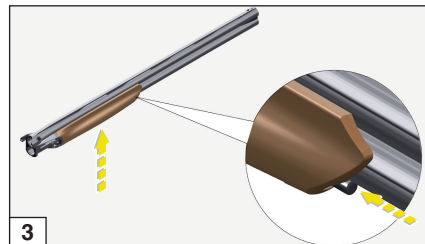
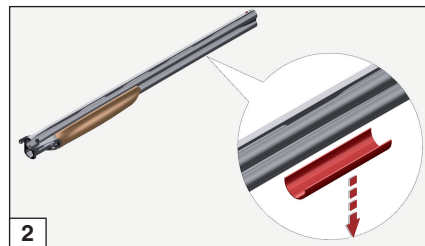
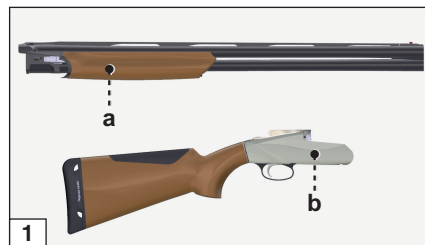
WARNING: do not insert the barrels into the receiver with the fore-end assembled.

WARNING: remove the plastic **barrel cover** (fig. 2).

For the first assembly of the shotgun, proceed as follows:

- 1) Press the fore-end against the barrels and activate simultaneously the **release button** (fig. 3).

KEY TO ARROW COLOURS	
<i>colour</i>	<i>description</i>
red	stripping sequence
green	assembly sequence
blue	location
yellow	action



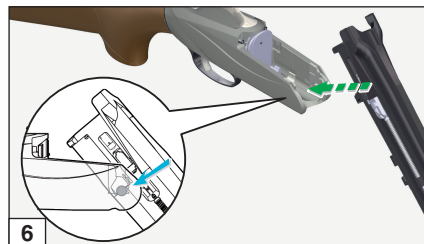
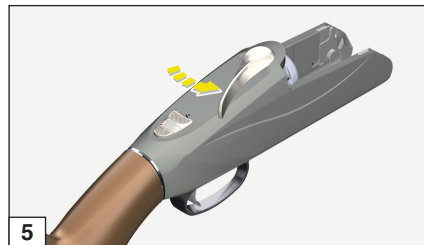
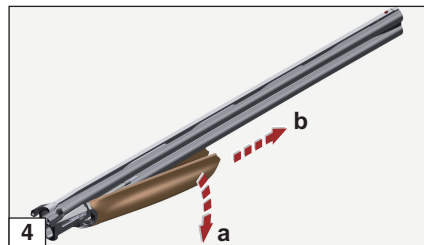


- 2) Slightly rotate and extract the fore-end forward (toward the barrel's muzzle) (fig. 4).
- 3) Hold the receiver assembly and rotate **the top lever** to the right (fig. 5).

WARNING: the lever-opening controls the striker cocking.

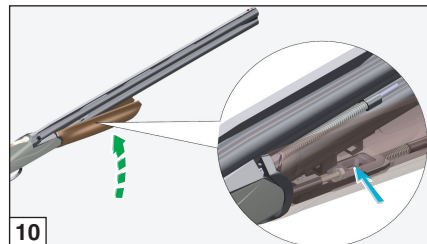
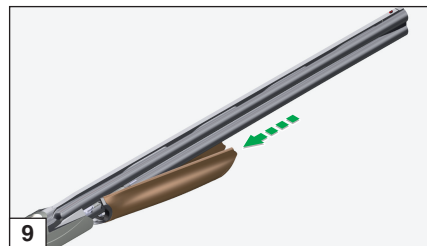
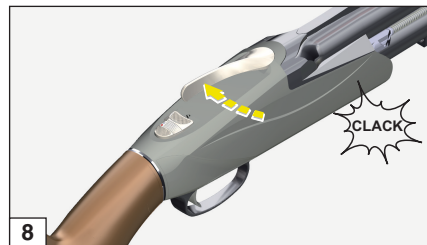
IMPORTANT: the lever **must never be closed** during assembly.

- 4) Assemble the barrel assembly into the receiver: the receiver pins **must fit** the respective seats on the barrel assembly (fig. 6).





- 5) To close the shotgun, **gently move** the barrel assembly upwards (fig. 7).
- 6) When the lever snaps towards the centre, the barrels are locked on the receiver (fig. 8).
- 7) Place the fore-end on the barrels and hook the fore-end iron to the receiver (fig. 9).
- 8) Rotate the fore-end upward and press against the barrels to hook the locking mechanism to the lug (fig. 10).





9) When the release button returns to the initial position, **the fore-end is clamped** (fig. 11).

Now the shotgun is ready to use: strictly follow the safety rules for safekeeping.

Safety catch

While pointing the shotgun barrels in a safe direction: engage the **safety catch** pulling back its control lever: the letter “S” must be **completely visible** (fig. 12).

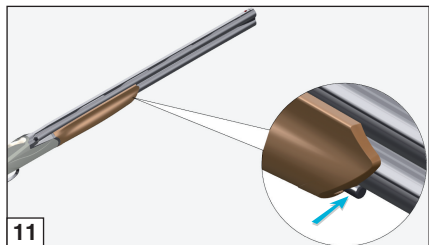
WARNING: in case of shotguns equipped with an “Automatic Safety Catch”, the safety catch is **automatically** engaged by the lever when opening the shotgun.

ATTENTION: both the manual and automatic safety catch are mechanical devices and they do not replace the responsibility of the shotgun user. All assembly/disassembly and maintenance operations must be carried out with the SAFETY CATCH ENGAGED.

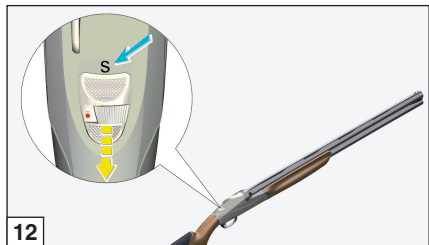
Firing selector

The shotgun is equipped with a “single selective trigger”; the selector position highlights through a RED DOT the first barrel that will fire when pulling the trigger:

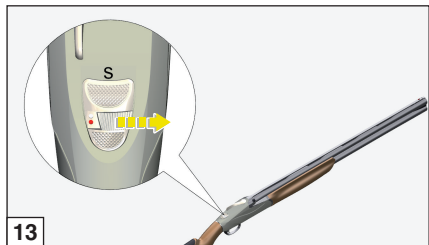
1) selector to the right = **first barrel** (lower, fig. 13);



11



12



13



2) selector to the left = **second barrel** (upper, fig. 14).
When pulling the trigger, the first barrel selected will fire.

Loading

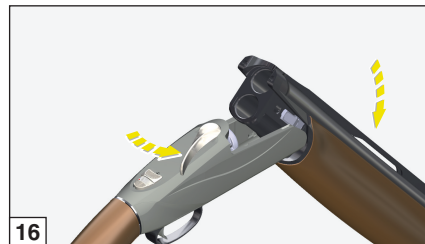
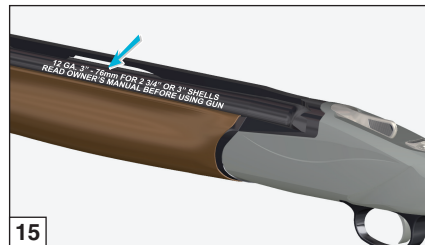
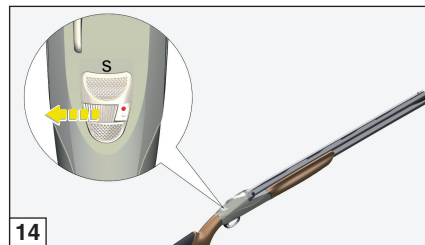
Before using the shotgun, it is advisable to become familiar with all the loading and unloading operations: read carefully the operations described below until you master them completely.

Always keep your finger out of the trigger guard if you do not intend to fire.

Before each hunting or shooting session, disassemble the shotgun and make sure that the chokes are present, clean, fully tightened and suitable for the ammunitions.

ATTENTION: the shotgun gauge and chambering are marked on the barrels (fig. 15).

- 1) Rotate the top lever and move the barrels downward (fig. 16).
- 2) Visually inspect the interior of the barrels then load it.





- 3) Insert the cartridges of the proper gauge into the chambers (fig. 17).
- 4) Close the shotgun and make sure that the lever snapped into the position shown in figure 18.

Choice of ammunition

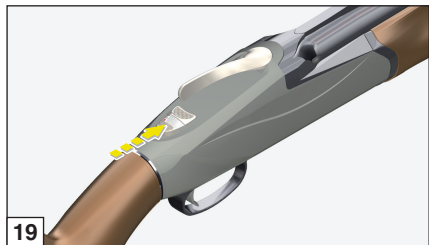
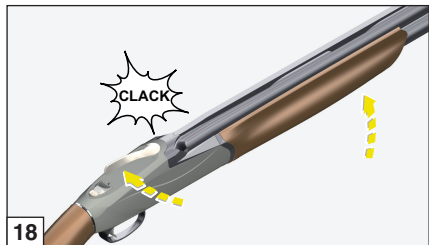
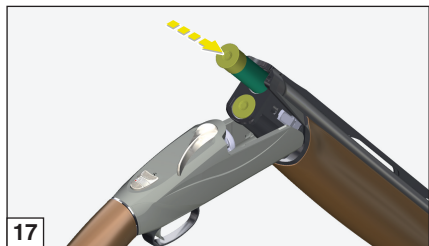
Shotgun functioning is guaranteed with cartridges featuring rolled turnover or crimped closures, and with lead or steel shot.

CAUTION: never use cartridges with a case longer than the chamber (fig. 15).

Non-compliance to this rule would have serious consequences for both the shotgun and the shooter.

No adjustment to the shotgun is necessary to fire any of the ammunition listed above.

All Benelli shotguns are subjected to a 1370 bar burst test at the Italian National Proof House in Gardone Valtrompia (Brescia).





Firing

- 1) Push forward the **safety catch** lever (the letter “S” is covered, see fig. 19): pulling the trigger, the first shot is fired.
- 2) Once the first shot is fired, completely release the trigger: the shotgun is automatically ready for a second shot without having to select the firing selector. Pull the trigger and fire the second shot.

ATTENTION

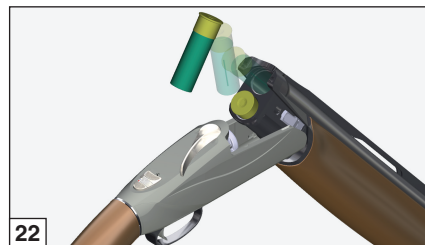
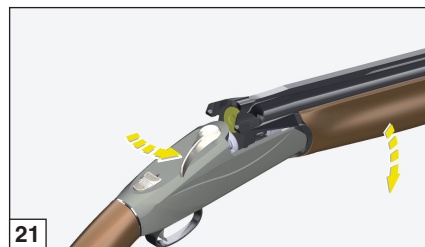
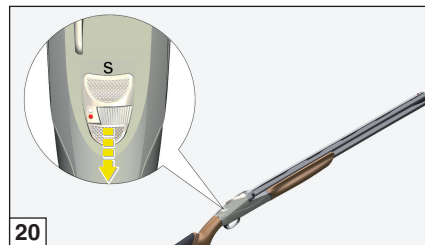
IF THE SHOTGUN DOES NOT FIRE, POINT THE BARRELS IN A SAFE DIRECTION AND ENGAGE THE SAFETY CATCH. WAIT AT LEAST 1 MINUTE, OPEN THE SHOTGUN AND MANUALLY REMOVE THE UNFIRED CARTRIDGE.

Unloading

During operation, carefully follow the safety regulations.

- 1) Point the barrels in a safe direction and engage **the safety catch** (fig. 20).
- 2) Rotate the top lever to the right and move the barrels downward (fig. 21).

IMPORTANT: when opening the shotgun after firing it, the extractors **eject** only empty cartridge cases and lift the unfired cartridges, facilitating their manual removal (fig. 22).





Strikers uncocking

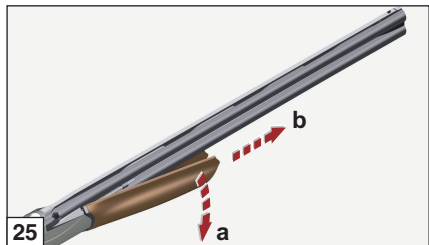
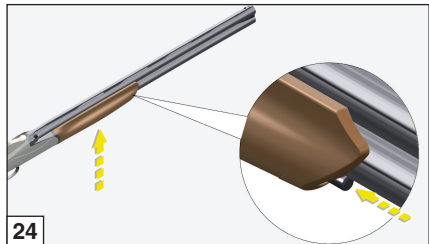
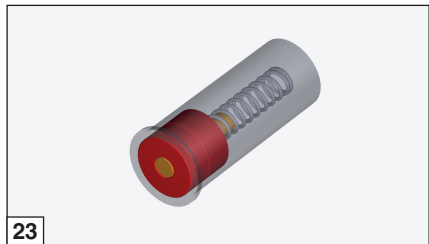
After unloading the shotgun and before placing it into its case, it is advisable **to uncock the strikers** to release the tension of the springs operating them.

To release the strikers without damaging the firing pins, it is advisable to use the proper “firing pin saving” **blank cartridges** (fig. 23) sold in gun shops that allow “blank firing”.

- 1) Load the shotgun normally with “firing pin saving” blank cartridges.
- 2) Pull the trigger to release the first striker.
- 3) Move the firing selector, pull the trigger and release the second striker.

Now it is possible to place the shotgun into its case.

WARNING: the lever-opening controls automatically the reloading of the strikers.





Shotgun stripping

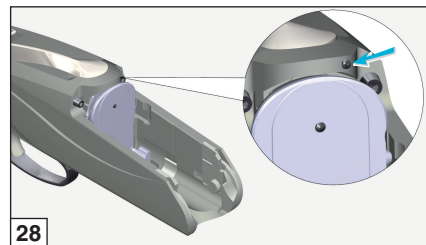
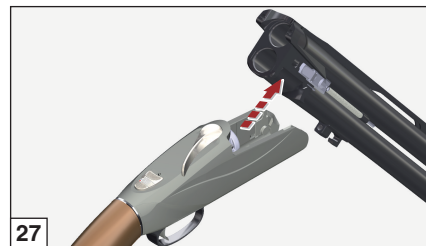
During disassembly operations, carefully follow the safety regulations.

- 1) Engage the safety catch (see section "SAFETY CATCH").
- 2) Press the fore-end against the barrels and simultaneously activate the release button of the fore-end (fig. 24).
- 3) Slightly rotate and extract the fore-end from the receiver (fig. 25).
- 4) Rotate the top lever to the right (fig. 26).
- 5) Move the barrels downward, holding them tightly to avoid that they slide out completely from their pins and fall down.
- 6) Slightly lift the barrels and remove them from the receiver (fig. 27).

WARNING: extract the "firing pin saving" blank cartridges, if they are still in.

To close the top lever

- 1) Press inward **the pin** on the receiver (fig. 28).



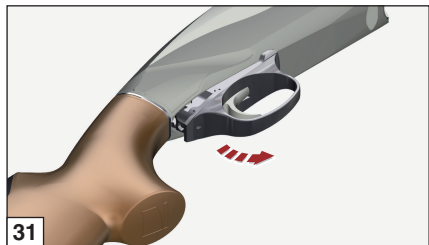
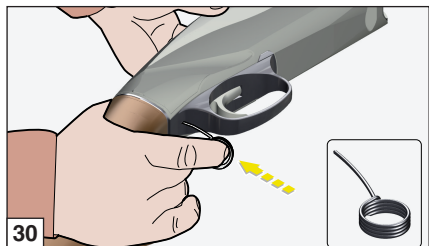
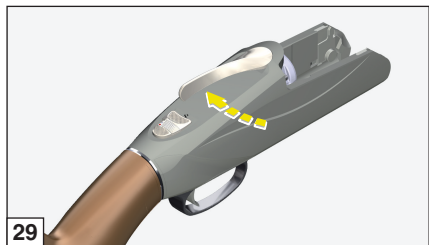


2) The lever snaps into closed position (fig. 29).

To disassemble the trigger guard

WARNING: DO NOT disassemble the trigger guard while the shotgun is assembled. Always follow the disassembly sequence described in the previous pages.

With the top lever closed, insert the provided tool **into the hole** shown in figure 30, **press** the interior locking pin until the trigger guard is free (fig. 31).





To reassemble the trigger guard

WARNING: make sure that the top lever is closed otherwise proceed as described in the section titled “To close the top lever” (see figs. 28-29).

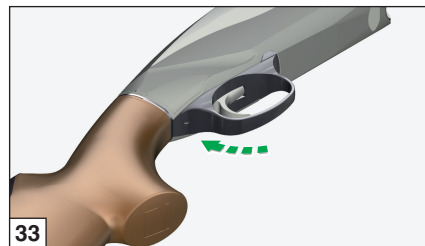
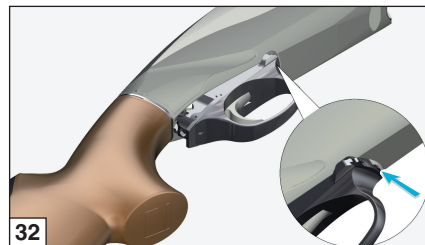
- 1) Place the **front teeth** inside the receiver (fig. 32).
- 2) Rotate the trigger guard and insert it into its seat, making sure that it is properly coupled with the receiver (fig. 33).

WARNING: if during the operations described above the trigger was pressed, we recommend not to force the extraction of the trigger guard, but to bring it back into position, and reload the strikers using the top lever.

Similarly, before re-assembling the trigger guard it is necessary to reload the strikers by pushing the inside (fig. 34).

Before placing the shotgun into its case

- 1) **Unload** both strikers by activating the trigger of the first barrel.
- 2) Move the selector on the second barrel and activate the trigger again.
- 3) Assemble the fore-end on the barrels (see operation described above).





Maintenance

Before starting any operation on your shotgun, always make sure that the chambers are unloaded! (Carefully read the instructions on gun loading and unloading).

Thanks to its extreme simplicity and excellent materials, the Benelli over-and-under **requires no** special maintenance.

The following few controls **are recommended**:

- 1) Normal cleaning **of the barrels** after use.
- 2) Remove by periodical cleaning and lubrication **any powder residuals** (or foreign matters) from trigger guard assembly.
- 3) To keep the gun in good order, oiling of the **parts subject** to atmospheric corrosion is recommended.
- 4) Loosen the choke by using the provided wrench and manually unscrew it counterclockwise.
- 5) Carefully clean the housings of the chokes and the thread inside the barrels using a proper thread cleaning tool.

- 6) Use a bronze brush sprayed with Benelli oil to clean the thread of the chokes.
- 7) Apply a light layer of Benelli oil into the housings of the barrels and on the chokes.
- 8) Manually screw the chokes clockwise and tighten them using the provided wrench until they are fully bottomed into their housings inside the barrels (fig. 35).

WARNING: in case of chokes with an external extension, after having screwed them in, just tighten them by hand with strength.

- 9) Remove the wrench from the barrel after tightening the chokes (fig. 36).

NB: all barrels are internally **chromium plated**.

NOTE: when cleaning a barrel with an internal choke fitted, leave the choke in place to prevent powder residues from fouling the threads inside the muzzle.

For a proper maintenance of your firearm, **use Benelli cleaning kit** (*not supplied*).

Benelli oil is recommended for lubricating and protecting mechanical parts (fig. 37).

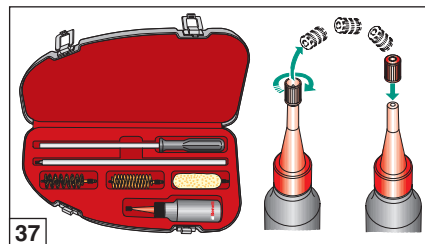
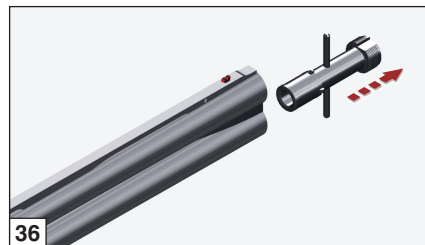
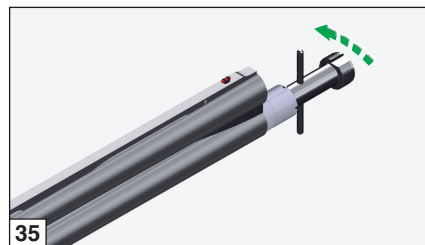


Benelli recommends the use of specific products for cleaning other parts (wooden, technopolymer or painted stock and fore-end). Avoid that parts get in contact **with oils containing solvents or chemical substances in general, which could alter or damage their surfaces.**

Shotgun assembly

Repeat steps from 1 to 9 as described on page 5 and 8.

To assemble the trigger guard, repeat the steps on page 15.





ACCESSORIES AND ADJUSTMENTS

PERFECT FITTING

Drop and cast fine adjustment

Before beginning any operation on your shotgun, always make sure that chambers have been completely emptied!

(Carefully read loading and unloading instructions).

With the use of the components in the **“drop change kit”** provided, it is possible to change the stock drop at heel from 42.5 mm up to 65 mm with a pitch of 2.5 mm and the stock cast from 3 or 6 mm to the RIGHT, or from 3 to 6 mm to the LEFT, measured on the butt plate axis. The available configurations of the cast-drop are therefore **forty**, as shown in the table.

Assess if the drop and deviation conform perfectly to your physical shape, or if the stock ends up being low, high, or diverted too much or too little.

NOTE: the ideal drop and deviation occur when, while shouldering the shotgun in a natural and instinctive way, the eye is exactly on the sight line.

Example: if the stock is too low, then the drop is too high, select a lower drop value. If the stock is too deviated select a reduced deviation value.

Proceed as follows to change shims (fig. 38):

- 1) Unscrew **the two fixing screws “1”** and remove **the butt plate “2”** (using a cross-head screwdriver).

WARNING: to avoid damaging the butt plates, **apply** a light coat of vaseline or grease to the shaft of the screwdriver.

- 2) **Unscrew the two fixing screws “3”** using a Phillips screwdriver and remove the **comfort kit “4”** from the stock.
- 3) Unscrew **the stock retaining nut “5”** (using a 13 mm hexagon wrench).
- 4) **Extract from the tie-rod, the stock nut “5”, the rubber lock washer “6”, the stock drop plate “7”, the stock “8”, the cast shim “9” and the drop shim “10”.**
- 5) Assemble onto the tie-rod **the drop shim “10” that you have selected**, with the stamped letter facing the stock.
- 6) Reassemble the selected **cast shim “9”**, with the stamped letter you have chosen (see instructions for coupling) facing the stock.
- 7) Point the barrels towards the floor and fit the **stock**, engage the relative **stock drop plate “7”** in the stock, with the side punched with the stamped letter you have chosen facing the butt plate.
- 8) Assemble **the rubber lock washer “6”** and **the stock nut “5”** on the tie-rod cap and fully tighten.



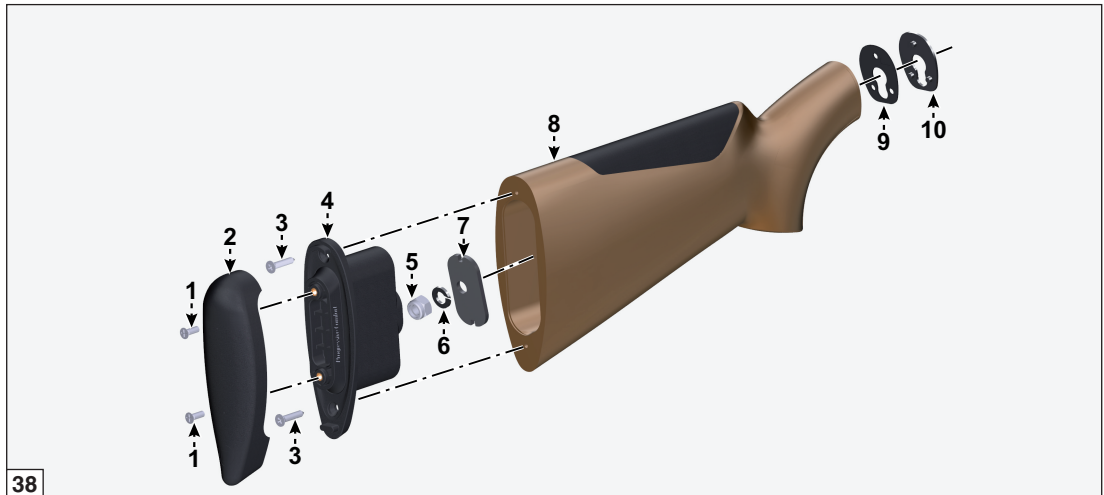
- 9) Fit the **comfort kit "4"** inside the stock and secure it with its **two screws "3"** using a Phillips screwdriver.
- 10) Fit the **butt plate "2"** and secure it with its **two screws "1"** using a Phillips screwdriver.

Having altered the stock drop of the shotgun, you have also obviously altered the firing position as well: it is therefore **necessary** that you first practise by executing

some shots in order to make sure that the firing position is suitable to your size and shooting style.

WARNING: on completion of the drop change, check that the stock is securely fixed to the receiver. Check again after firing the first few rounds and, if necessary, re-tighten the nut with a suitable wrench to fix the stock securely in place.

GB

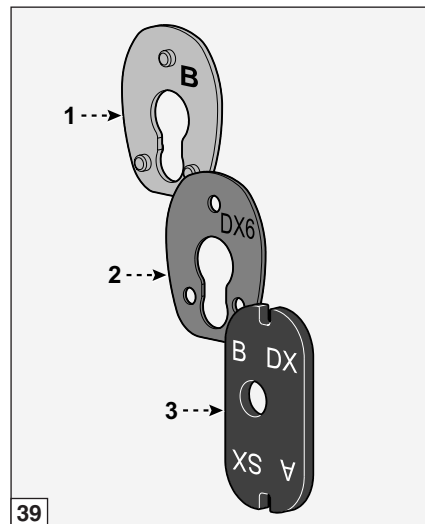




Instructions for plate coupling (fig. 39)

- The letters **(A-B-C-D-Z)** identify the plastic DROP CHANGE shim (No. 1 in figure 39) and the steel drop plate (No. 3 in figure 39), which also shows the **DX** or **SX** reference depending on the desired cast.
- The available CAST shims (No. 2 in figure 39) are four, as identified by the names stamped on both sides:
 - **DX3** and **DX6** (reversed: **SX3**; **SX6**) allow the cast of the stock to the RIGHT or to the LEFT by 3 mm or 6 mm (measured on the axis of the butt plate).
 - **DX3 - 1/2 DROP**; **DX6 - 1/2 DROP** (reversed: **SX3 - 1/2 DROP**; **SX6 - 1/2 DROP**)
In addition to the cast of 3 mm or 6 mm, they allow the fine adjustment of the stock drop, allowing DECREASING ITS VALUE by 2.5 mm (on the measurement of the coupled DROP CHANGE shim, measured at the heel).

Example:



**PERFECT FITTING table (fig. 40)**

The table shows the combination of plates necessary to obtain the drop/change desired among the 40 available ones.

Drop and cast values in millimetres. <i>Note: sizes shown here are liable to minimal changes.</i>		CAST TO THE LEFT (SX)			CAST TO THE RIGHT (DX)								
		- 6		- 3	+ 3	+ 6							
DROP	42,5	Z	+ SX6 -1/2 DROP	+ Z SX	Z	+ SX3 -1/2 DROP	+ Z SX	Z	+ DX3 -1/2 DROP	+ Z DX	Z	+ DX6 -1/2 DROP	+ Z DX
	45	Z	+ SX6 -1/2 DROP	+ Z SX	Z	+ SX3 -1/2 DROP	+ Z SX	Z	+ DX3 -1/2 DROP	+ Z DX	Z	+ DX6 -1/2 DROP	+ Z DX
	47,5	A	+ SX6 -1/2 DROP	+ A SX	A	+ SX3 -1/2 DROP	+ A SX	A	+ DX3 -1/2 DROP	+ A DX	A	+ DX6 -1/2 DROP	+ A DX
	50	A	+ SX6 -1/2 DROP	+ A SX	A	+ SX3 -1/2 DROP	+ A SX	A	+ DX3 -1/2 DROP	+ A DX	A	+ DX6 -1/2 DROP	+ A DX
	52,5	B	+ SX6 -1/2 DROP	+ B SX	B	+ SX3 -1/2 DROP	+ B SX	B	+ DX3 -1/2 DROP	+ B DX	B	+ DX6 -1/2 DROP	+ B DX
	55	B	+ SX6 -1/2 DROP	+ B SX	B	+ SX3 -1/2 DROP	+ B SX	B	+ DX3 -1/2 DROP	+ B DX	B	+ DX6 -1/2 DROP	+ B DX
	57,5	C	+ SX6 -1/2 DROP	+ C SX	C	+ SX3 -1/2 DROP	+ C SX	C	+ DX3 -1/2 DROP	+ C DX	C	+ DX6 -1/2 DROP	+ C DX
	60	C	+ SX6 -1/2 DROP	+ C SX	C	+ SX3 -1/2 DROP	+ C SX	C	+ DX3 -1/2 DROP	+ C DX	C	+ DX6 -1/2 DROP	+ C DX
	62,5	D	+ SX6 -1/2 DROP	+ D SX	D	+ SX3 -1/2 DROP	+ D SX	D	+ DX3 -1/2 DROP	+ D DX	D	+ DX6 -1/2 DROP	+ D DX
	65	D	+ SX6 -1/2 DROP	+ D SX	D	+ SX3 -1/2 DROP	+ D SX	D	+ DX3 -1/2 DROP	+ D DX	D	+ DX6 -1/2 DROP	+ D DX



Internal choke

Before performing any type of operation on the shotgun, always make sure that the chambers are completely empty!

(Carefully read the instructions on gun loading and unloading).

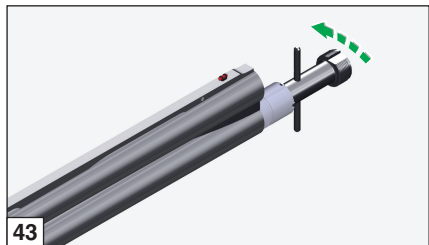
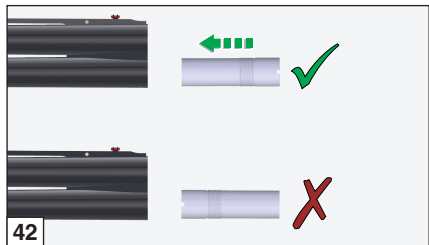
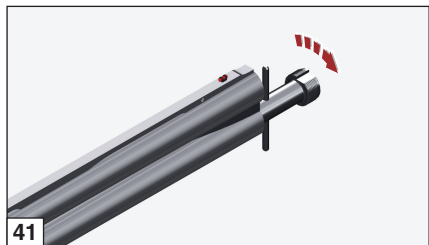
The barrels with internal chokes are equipped with various types of chokes.

WARNING: before using the shotgun, make sure that the barrels have a choke correctly installed.

NOTE: if correctly installed, internal chokes must not protrude from the barrel's muzzle. Only use Benelli chokes of a length suitable for the choke seat of the barrel.

To change or clean the internal choke, proceed as follows:

- 1) **Unscrew** the internal choke using the special **choke wrench** supplied with the shotgun and extract it completely from the barrel seat (fig. 41).
- 2) If the choke threads on the barrels become **badly fouled**, clean them with the serrated side of the choke wrench.
- 3) Reassemble the kind of choke required on the barrel seat, taking care to **insert the non-threaded part** inside the barrel; then screw the choke on the barrel thread (fig. 42).
- 4) Complete installation of the choke using the toothed wrench provided (fig. 43).





NOTE: when choke is correctly mounted, it **must not protrude** from the barrel's muzzle (fig. 44).

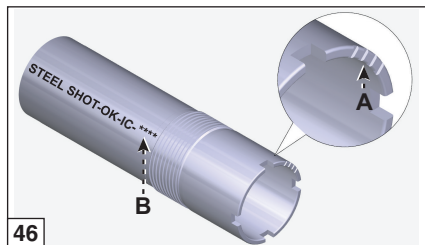
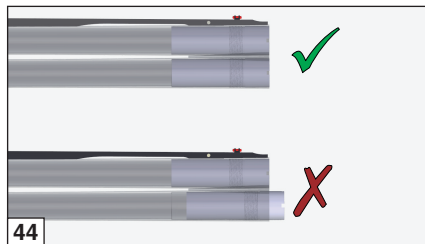
NOTE: before re-using the shotgun, **make sure that the choke wrench has been removed** from the barrel's muzzle (fig. 45).

Before the shotgun is put away, cleaning the internal choke and relative barrel thread is recommended.

Benelli chokes are marked for an easy identification (fig. 46). Notches on the **frontal part** of each choke allow a quick recognition, even when the choke is mounted on the shotgun.

NOTCHES	CHOKE	SYMBOL	STEEL SHOT
I	Full	X	NO
II	Improved Modified	XX	NO
III	Modified	XXX	OK
IIII	Improved Cylinder	XXXX	OK
IIIII	Cylinder	XXXXX	OK

NOTE: before using steel shot cartridges, make sure that the choke fitted in the barrel is marked "**STEEL SHOT – OK**".



A Notches

B Symbol



ATTENTION: before using the shotgun, make sure that the chokes **are installed** on the barrels in accordance with the ammunition in use, making sure also that they are clean and tightened into their seats.

ATTENTION: **never attempt to fire** without the intended chokes: the thread of the barrels without the choke **may be damaged** by the shot and then can trigger erratic patterns. In addition, it may retain residues or fragments of ammunitions, with possible **obstruction of the barrels**.

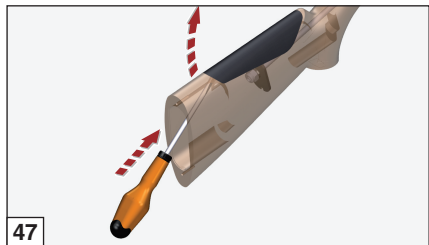
Removing and changing the comb

Proceed as follows to remove and change the comb.

- 1) **Unscrew the two fixing screws "1"** using a **Phillips screwdriver** and remove the **butt plate "2"** (see fig. 38).

WARNING: **smear** the tip of the screwdriver with Vaseline or grease to avoid damaging the stock.

- 2) Using the same Phillips screwdriver, **unscrew the two fixing screws "3"** and remove the **comfort kit "4"** from the stock (see fig. 38).
- 3) Insert the tip of a screwdriver through the hole provided in the rear of the stock. Push the bottom of the comb upwards to release its back edge, then lift it and remove it from the stock (fig. 47).





- 4) To fit the new comb, position it so that the two dowels on its underside line up with the holes in the seat on the stock, then push the comb firmly down until it clicks into place (fig. 48).

WARNING: the edges of the comb must mate perfectly with the profile of the stock when correctly fitted.

- 5) Fit the **comfort kit "4"** and then the **butt plate "2"** to the stock (see fig. 38).

GB

Interchangeable ribs

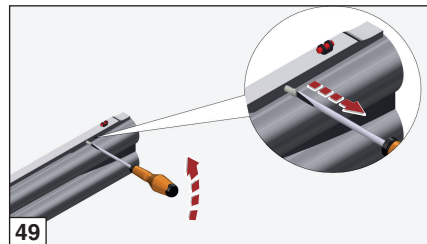
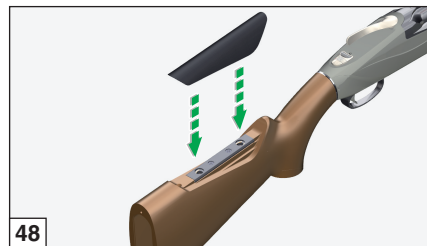
Before starting any operation on your shotgun, make sure that the chambers are completely empty!

(Carefully read the instructions on gun loading and unloading).

The shotgun is fitted as standard with a low rib.

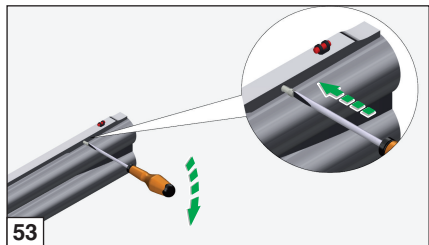
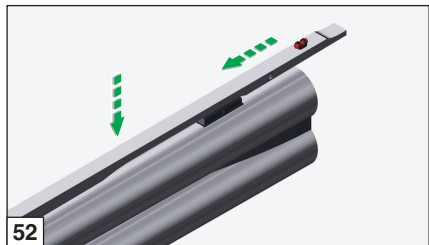
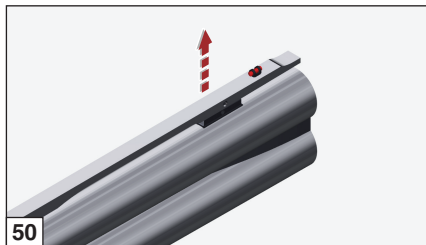
The rib can be easily replaced, following the instructions below:

- 1) **Unscrew and remove** the field rib screw from the front end of the barrels, near the front sight (fig. 49).





- 2) **Lift and extract** the rib from its seats on the barrels pulling it forward (figs. 50-51).
- 3) Place the required rib, taking care to **properly insert** the housings, then **set** the rib along the barrels for the whole length (fig. 52).
- 4) **Fix** the rib with the fixing screw (fig. 53).



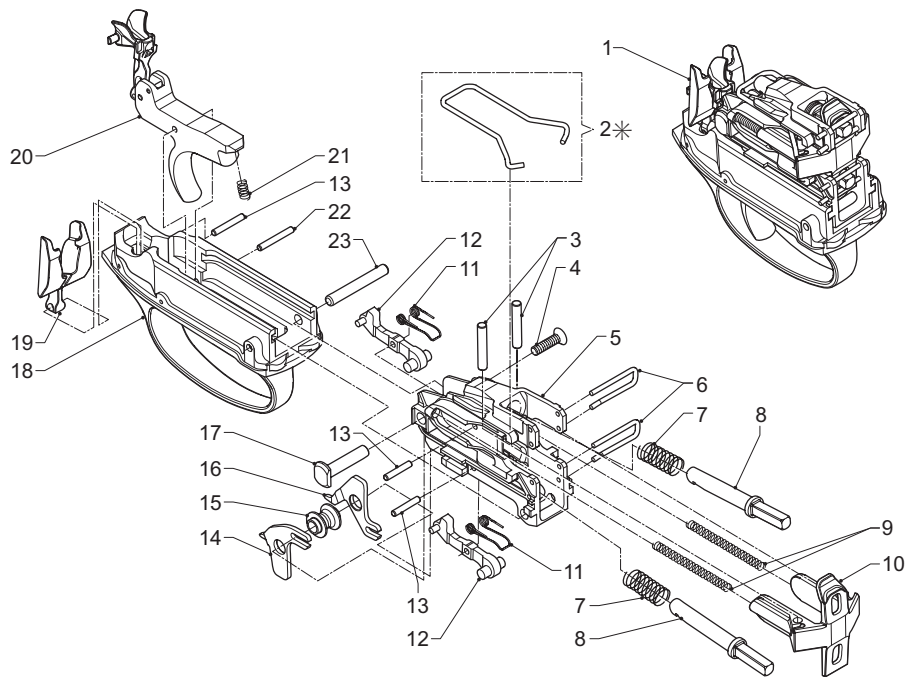


Spare Parts

To order spare parts you must specify the gauge, the model and the serial number of your shotgun.
Part numbers here listed refer to respective drawings.



Drawing 1





Pos. No.	Description
1	Trigger guard assy
2	* Automatic safety lever <i>(only for models equipped with it)</i>
3	Cocking plate stop pin
4	Connector pin screw
5	Fire control housing
6	Striker retaining clip
7	Striker spring
8	Striker
9	Cocking plate spring
10	Cocking plate
11	Sear spring
12	Sear
13	Sear pin
14	Top sear connector
15	Connector spacer
16	Bottom sear connector
17	Connector pin
18	Trigger guard
19	Selector inertia block

Pos. No.	Description
20	Trigger/selector assembly
21	Trigger spring
22	Trigger pin
23	Housing retaining pin

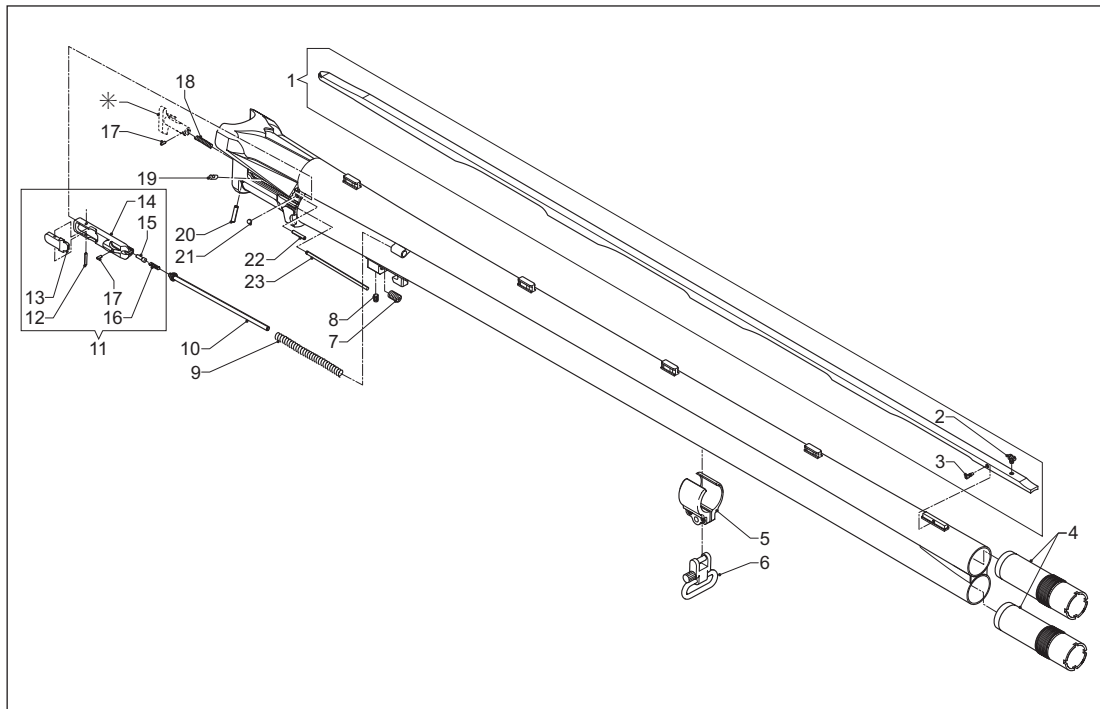


Pos. No.	Description
1	Breech block spring
2	Breech block assy
3	Firing pin
4	Firing pin spring
5	Firing pin ret pin
6	Breech block bushing
7	Barrel locking pin
8	L.H. hinge pin
9	Top lever pin retainer
10	L.H. wear plate
11	R.H. wear plate
12	R.H. hinge pin
13	Buffer
14	Cocking lever assy
15	Cocking lever screw
16	Barrel locking plate
17	Locking plate spring
18	Safety spring screw
19	Trigger guard latch
20	Latch spring

Pos. No.	Description
21	Latch spring bushing
22	Drop shim
23	Cast shim
24	Stock bolt
25	Stock drop plate
26	Lock washer
27	Stock nut
28	Safety retainer
29	Safety spring
30	Safety/selector assy
31	Lever lock bush
32	Lever lock pin
33	Top lever
34	Lever lock spring
35	Lever lock plunger



Drawing 3



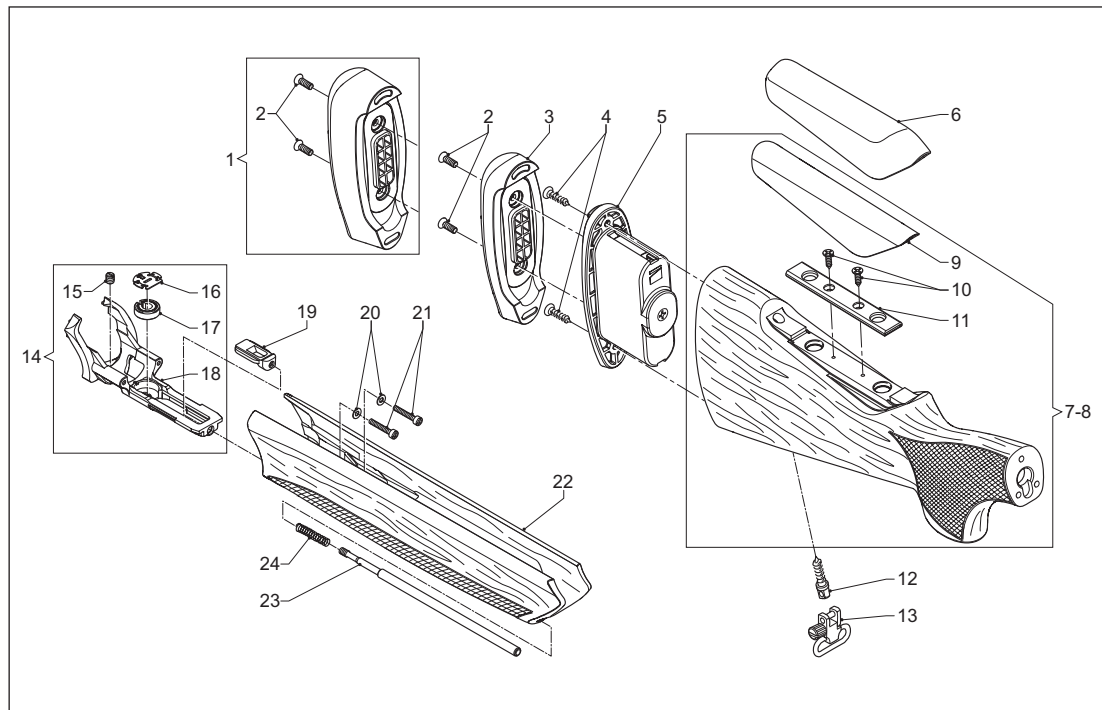


Pos. No.	Description
1	Hunting low rib assy
2	Fluorescent front sight
3	Field rib screw
4	Choke
5	Sling swivel base
6	Removable sling swivel
7	Forend adjusting screw
8	Lock screw
9	Ejector spring
10	Ejector spring guide
11	Ejector body assy
12	Ejector sear pin
13	Ejector sear
14	Ejector body
15	Ejector sear detent
16	Ejector sear spring
17	Spring retaining pin
18	Extractor spring
19	Ejector piston
20	Extractor retaining pin

Pos. No.	Description
21	Piston disassembly ball
22	Piston retaining pin
23	Extractor rod
*	Extractor
	Note: Extractor - factory replacement only.



Drawing 4





Pos. No.	Description
1	Recoil pad kit medium
2	Recoil pad screw
3	Recoil pad short
4	Progressive-Comfort housing screws
5	Progressive-Comfort housing
6	Raised gel comb
7	Stock assy, standard (L.O.P. 375-385 mm)
8	Stock assy, medium (L.O.P. 365 mm)
9	Standard comb
10	Comb base screw
11	Comb base
12	Stock sling swivel stud
13	Removable sling swivel
14	Fore-end iron assy
15	Fore-end adjusting screw
16	Fore-end spring cap
17	Fore-end adjusting spring
18	Fore-end iron
19	Fore-end catch
20	Washer

Pos. No.	Description
21	Fore-end iron screw
22	Wood fore-end
23	Fore-end button
24	Fore-end button spring